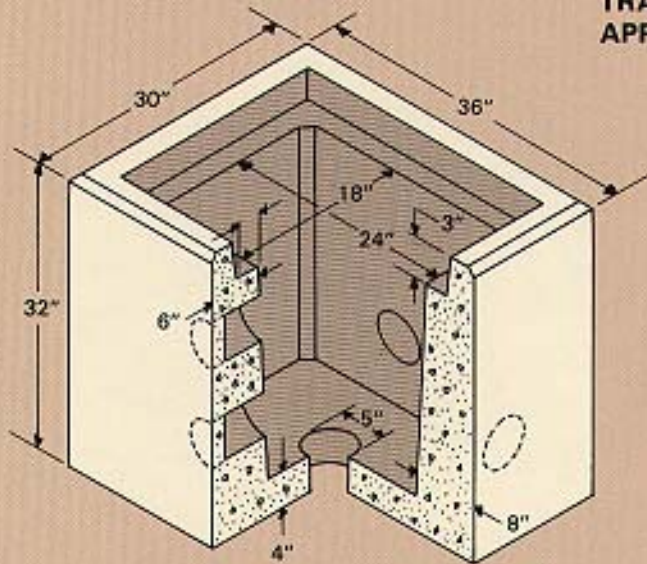


**TRAFFIC SIGNAL HANDBOX, VDHT
APPROVED, EJB-4A**



DIMENSIONS

INSIDE - 18"x24"x28"

KNOCKOUTS

AS REQUIRED

TOTAL WEIGHT

2,050 LBS.

NOTE: Lifting inserts provided

JUNCTION BOX

MODEL 1824

