



Fully Tested

Pin-Down Crash Test w/ 36" Deep Vertical Cut

If it's "J-J Hooked," You Know it's Secure.

NCHRP-350, Test Level 3, Crash Tested (Free-Standing)

Meets or exceeds requirements for Jersey, F-Shape, and Constant Slope.

Approved in most states and Canadian Provinces, as well as Australia, New Zealand and many European countries.

100% positive connections allow no loss of structural integrity due to bent or missing hardware. Provides a continuous positive shear connection throughout the barrier system.

MASH, Test Level 3, Crash Tested (Free-Standing, Bolt-down, and Pin-down)

Meets or exceeds requirements for Jersey, F-Shape, and Constant Slope.

Lowest dynamic deflection in:

Bolt-down installation - 5.9 inches

Pin-down installation - 8.8 inches

Free-Standing installation - 64.2 inches

For A Full Summary of Test results:
www.jjhooks.com/technical/crash-test

J-J Hooks BENEFITS: Making Your Project Faster.

Self-aligning

- Automatically "hooks" into place using "cast-in" alignment guide
- No pins means no binding and no need to "jostle" barrier when installing or removing.
- Ability to create tighter radii

No loose hardware - theft-proof connection

- No loss of structural integrity, security breaches or liability due to missing or stolen hardware
- Eliminates replacement costs for lost bolts and connection hardware

Fastest setting times - lowest installation costs

- Compatible J-J Hooks hardware connects MASH & NCHRP-350 barriers in the same installation
- Identical ends allow the barrier to be turned end-for-end
- Smaller installation crews, no loose hardware
- A barrier can be removed without disturbing adjacent barriers
- Vertical-lift simplifies installation and removal
- Improved safety - no hands between barrier segments during placement

J-J Hooks®

Connection System

- Faster to Set
- Smaller Crew Required
- Superior Worker Safety
- Lower Costs
- No Loose Hardware
- Fully Tested
- Identical Connection regardless of direction or barrier type
- Over 35 Years of proven results

JJHooks.com

The World's Most Widely Used Precast Concrete Barrier Connection System.

"These barriers are very easy to use; it's amazing how quickly they can be set up, in place, and ready to use."

Jim Hollar, Owner and Founder
Cold River Bridges

"We've been extremely pleased with J-J Hooks® ... The ... barriers are not a male-female system like some of the others ... more versatility is built in which often allows less planning and less labor during traffic switches to ensure the barrier is configured correctly ... some of the other positive connection barrier systems bind up during placement and removal often causing damage to the wall - the J-J Hooks® system seldom does."

Ryan Gorman, P.E., Sr. Project Manager
Corman Construction, Inc.

"The average offload and set-in-place pace was 8-10 minutes per truck, with each truck delivering five 20-foot wall pieces. This is much more efficient and safer than the old 'connector style' barrier walls."

Michelle Powell, Sales Representative
Oldcastle Precast, Kentucky

"For our barrier rental business, speed of installation matters. The J-Hooks make connections simple. We can put down or pick up J-J Hooks as fast as the trucks roll in."

Tim Williams, Manager
Concrete Safety Systems

Manufactured locally by:

SMITH-MIDLAND®
 EXCELLENCE IN PRECAST CONCRETE

5119 Catlett Road, Midland, VA 22728
 info@smithmidland.com, 540-439-3266
SmithMidland.com

SMITH-CAROLINA®
 EXCELLENCE IN PRECAST CONCRETE

2574 Highway 65 West, Reidsville, NC 27320
 info@smith-carolina.com, 336-349-2905
Smith-Carolina.com

SMITH-COLUMBIA®
 EXCELLENCE IN PRECAST CONCRETE

9790 Garners Ferry Road, Hopkins, SC 29061
 info@smithcolumbia.com, 803-708-2222
SmithColumbia.com

The J-J Hooks® Connection System is available only through Easi-Set's network of Licensed J-J Hooks® Producers.



5119 Catlett Road • PO Box 400 • Midland, VA 22728 • (800) 547-4045 • (540) 439-8911 • fax: (540) 439-2541
www.EasiSet.com • www.JJHooks.com • info@EasiSet.com
 EASI-SET® Worldwide is a licensor of precast products worldwide and a wholly owned subsidiary of Smith-Midland Corp. (DE), a publicly traded company. EASI-SET® and J-J Hooks are registered trademarks of EASI-SET® Worldwide.
 © 2018 by EASI-SET® Worldwide. All rights reserved. Printed in USA.

Fast! Easi! Secure!



J-J Hooks®

Connection System

A Complete System of Safety Barriers

- MASH TL3 Free-Standing
- MASH TL3 Bolt-Down
- MASH TL3 Pin-Down
- NCHRP-350 TL3 Free-Standing



JJHooks.com



Licensed for Manufacture by

NORTH AMERICA'S COMPLETE BARRIER SYSTEM: LOWEST COST TO PURCHASE/RENT, LOWEST COST TO INSTALL/REMOVE, LOWEST DEFLECTION

FREE-STANDING: MASH & NCHRP-350, Test Level 3*

Meets or exceeds requirements for Jersey, F-Shape, and Constant Slope



North America's Most Popular Precast Concrete Barrier: More Than 13 Million Linear Feet Of J-J Hooks Barrier Installed To Date

J-J Hooks, proprietary precast concrete safety barrier, has been manufactured for over 35 years and is currently being sold at a pace of one million feet annually, making it the most widely used safety barrier connection design for road construction and security applications in North America.

"One man and a loader operator can install more than 5,000 feet per shift!"



Road Construction

J-J Hooks traffic barriers reduce the risk of head-on collisions and construction worker accidents from out-of-control vehicles crossing over the median, or into work zones. The weight of barriers and the interlocking J-J Hooks design provide sufficient inertia to redirect an impacting vehicle without requiring attachment to the highway.

Security

They are used to create temporary or permanent physical security barrier by defining a 'Setback Distance', to fortify high risk sites. They serve as a deterrent to terrorists and can prevent vehicular intrusion, closing off potentially dangerous areas or vital objects.

Crowd Control

Crowd control barriers act as a physical and psychological barrier, by defining "no access" zones, and to designate areas for lines, redirect pedestrian flows into new patterns. Additionally, the sections can be modified to include a top-mounted security fence.



J-J Hooks easily work a curve



The maximum angle between barriers is approximately 7 degrees. The minimum achievable radius is dependant on barrier length. Examples:

- 8-foot barriers = 68' radius
- 10-foot barriers = 84' radius
- 12-foot barriers = 100' radius
- 20-foot barriers = 165' radius
- 30-foot barriers = 246' radius

PIN-DOWN: MASH, Test Level 3 (8.8" Dynamic Deflection)

Meets MASH requirements (Manual for Accessing Safety Hardware) - FHWA Letter B-52C



Crash Test Installation photos

Pin-Down System for Lane Reconstruction Applications

MASH crash tested at 6" from a 36" deep vertical cut. The J-J Hooks® Pin-Down Barrier system provides: unprecedented protection, maximum lane utilization, and superior performance.

Pin-Down Features & Benefits:

- Easy Installation (3 pins for 12' section, 4 pins for 20' section, additional pins for 30' section)
- Headed 48" pin with mating tools for speedy installation and removal
- Maximum protection for excavations located within 6 inches of pinned barrier
- Available for Private Applications: wharf & dock, sports & convention centers, railroad, and perimeter security.



Threaded removable pin extension used for installation & removal



Pins installed - 3 minutes each

Pin installed

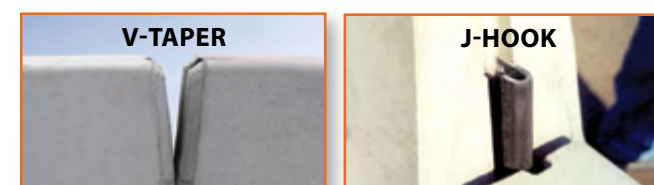


Removing pin



Pin removed

Accept only the original! J-J Hooks®



Look for the unique J-J Hooks design features

The J-Hook Connector and the V-Taper are U.S. trademarks of Easi-Set Worldwide.

BOLT-DOWN: MASH, Test Level 3 (5.9" Dynamic Deflection)

North America's Only **2 Bolt** MASH-Tested Barrier - FHWA Letter B-52B



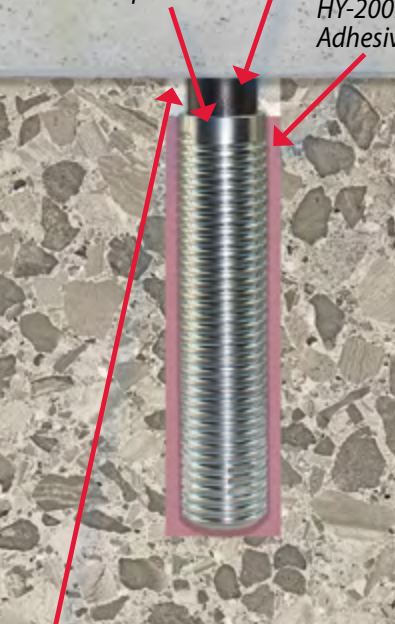
Proprietary Bolt Assembly

Square washer has tab bent to prevent bolt from vibrating loose.



Structural Washer

Threaded Anchor is recessed up to 1/2"



Hole is filled with grout after bolt removal

Easi-Set/Hilti Bolt, Anchor & Adhesive System for Bridge Applications

Partnering with international brand, Hilti Corporation, Easi-Set Worldwide offers a proprietary Bolt Assembly and Adhesive System for anchoring precast barrier to bridges.

Bolt-Down Features & Benefits:

- Allows fast, easy removal of barriers without flame-cutting bolts or damage to the bridge deck
- Easy installation (2 bolts for 12' section, 3 bolts for 20' section, additional bolts for 30' section), bolts are reusable
- Anchoring system used with HY-200R Adhesive (Hilti)
- Six inch anchors are recessed for easy bridge deck patching

Crash Test Installation Photos



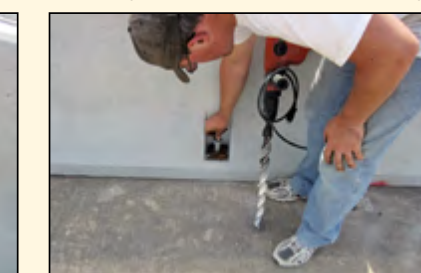
Drilling hole



Cleaning hole with air and brushing



Injecting HY-200R Adhesive



Installing Anchoring System

*NCHRP 350 dynamic deflection - 51.2" FHWA Letter B-52; MASH deflection 64.2" FHWA Letter B-300