

# SLENDERWALL®

Architectural Precast Concrete/Steel Stud Insulated Building Panels

## High Performance Precast Building Envelope

Best Quality,  
Best Performance  
In The Industry



Nine on the Hudson  
Port Imperial, NJ



SlenderWall® is an  
Easi-Set® licensed product

# A Choice Where Everyone Is Rewarded

SlenderWall® is a composite envelope system designed with your primary needs in mind:

- **VISUAL IMPACT**
- **VALUE**
- **LONGEVITY**
- **RISK MITIGATION**

## Who Benefits

- **ARCHITECT**
- **ENGINEER**
- **SPECIFIER**
- **CONTRACTOR**
- **DEVELOPER**
- **OWNER**

*"Minimalistic or as ornate as one wishes"*

*"Designed & tested to exceed standards"*

*"Creative, functional & aesthetically pleasing"*

*"Reduced manufacturing & erection schedules"*

*"Value driven complete facade system"*

*"Delivered aesthetics within budgetary goals"*



800 Harbor  
Lincoln Harbor, NJ



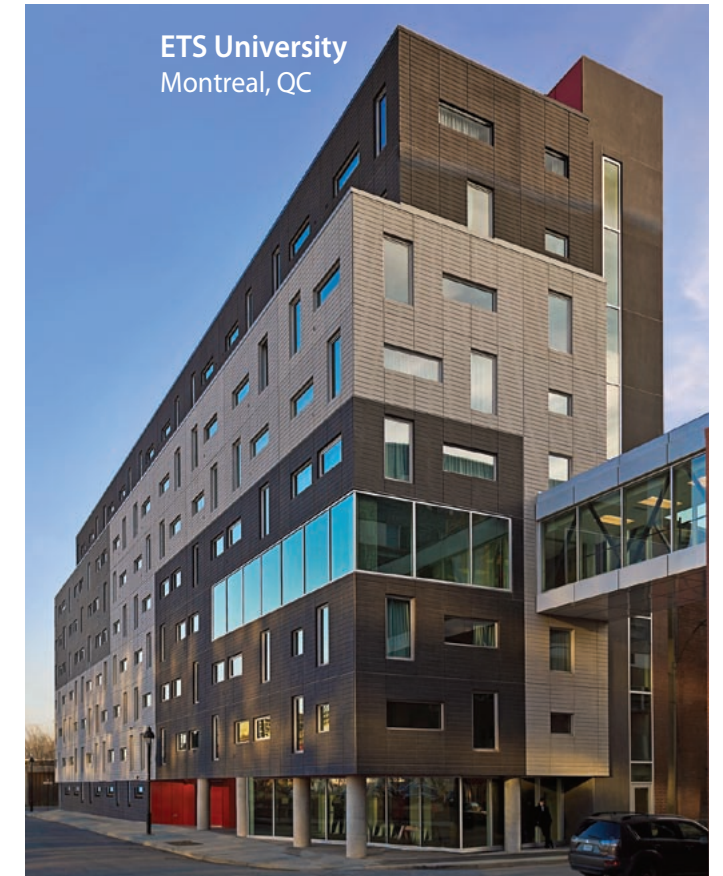
# Low-Rise To High-Rise Performance

A single efficient modular product that combines proven technologies for:

- **NEW CONSTRUCTION**
- **RE-CLADDING**
- **OVER-CLADDING**



Bioinnovation Center  
New Orleans, LA



ETS University  
Montreal, QC



The Lumen  
Tysons Corner, VA

- **HEALTHCARE**
- **HOSPITALITY**
- **INSTITUTIONAL**
- **MIXED-USE**
- **MULTI-FAMILY**
- **OFFICES**
- **SCHOOLS**

Johns Hopkins  
Baltimore, MD



**SLENDERWALL®**

Architectural Precast Concrete/Steel Stud Insulated Building Panels

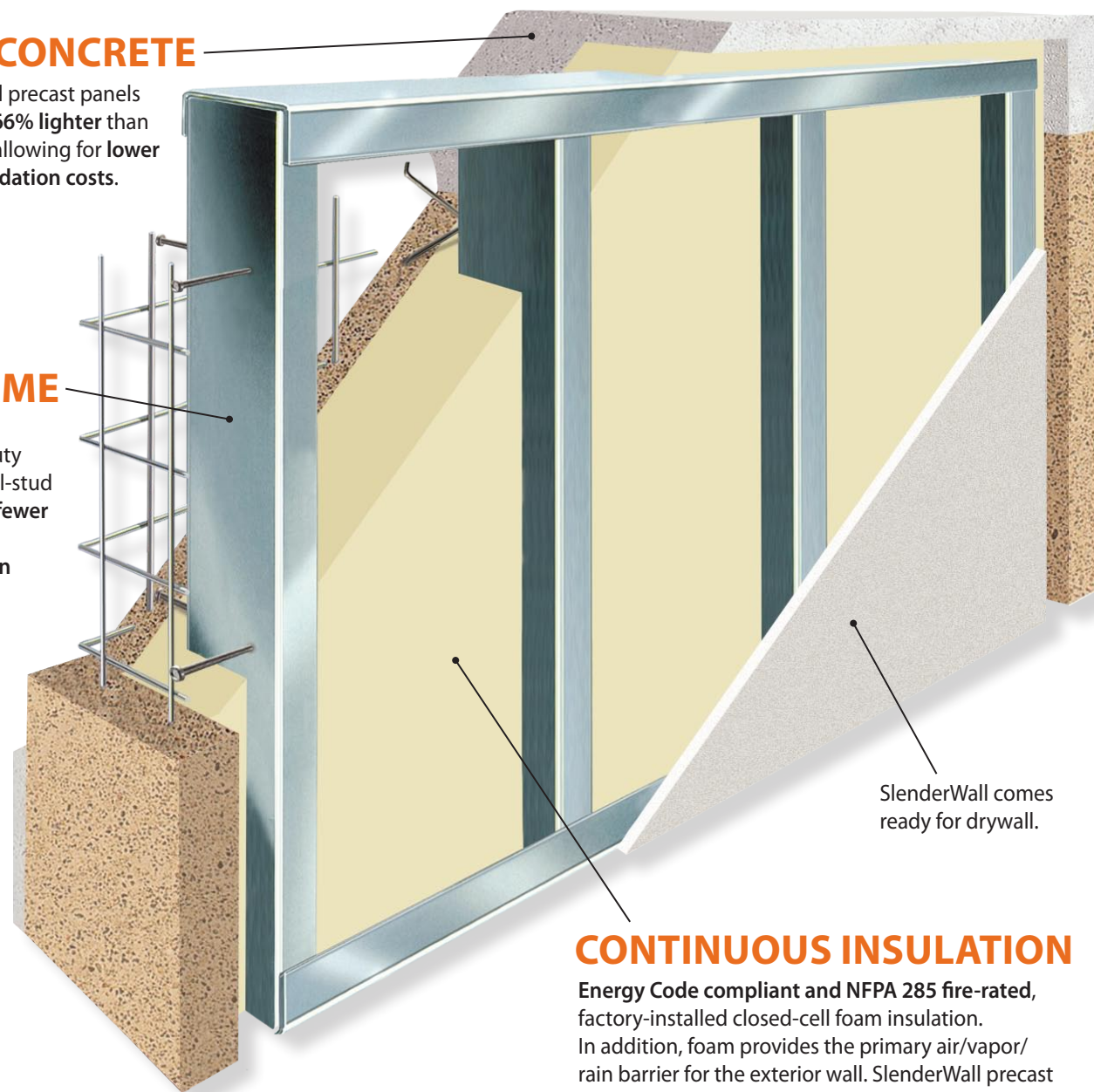
# A Complete System, Inside And Out

## PRECAST CONCRETE

2" thick architectural precast panels only 30 lbs. per s.f., **66% lighter** than traditional precast, allowing for **lower structural and foundation costs.**

## STUD FRAME

Ready for drywall, integrated heavy-duty G90 galvanized steel-stud framing equates to **fewer on-site trades** and **shorter construction schedules.**



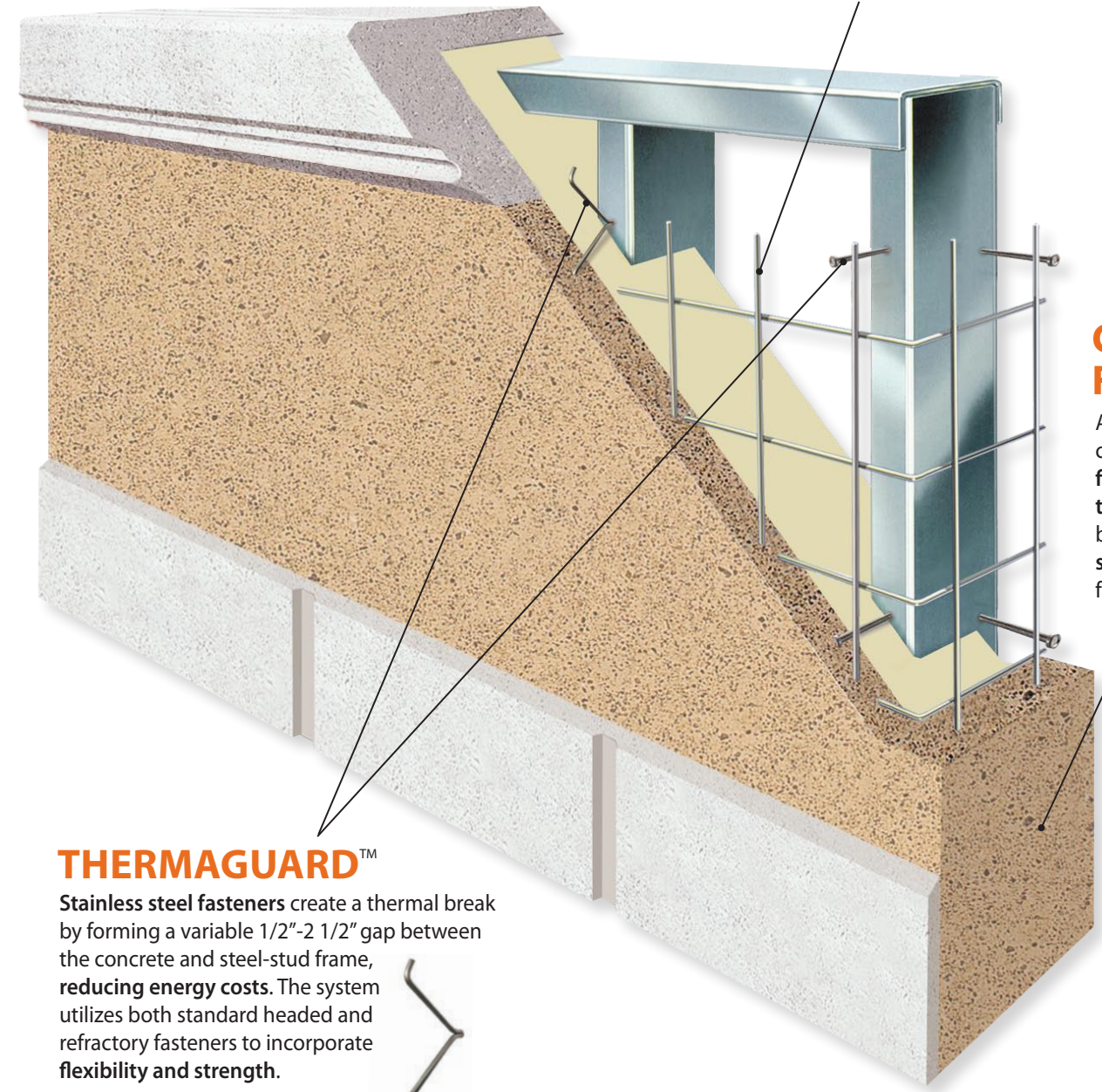
SlenderWall comes ready for drywall.

## CONTINUOUS INSULATION

Energy Code compliant and NFPA 285 fire-rated, factory-installed closed-cell foam insulation. In addition, foam provides the primary air/vapor/rain barrier for the exterior wall. SlenderWall precast building panels have been lab tested to meet IECC Thermal Requirements from Zone 1 through 8.

## 2X REINFORCEMENT

Both high-tech fiber and welded-wire reinforcement are used in combination, **wind-load tested to 226 mph.**



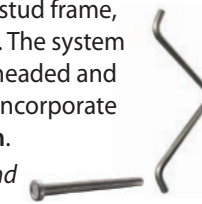
## CLASS "A" FINISHES

A vast array of standard, custom and proprietary finishes, colors and textures including thin brick, stone veneers, **standard and custom formed patterns.**

## THERMAGUARD™

**Stainless steel fasteners** create a thermal break by forming a variable 1/2"-2 1/2" gap between the concrete and steel-stud frame, **reducing energy costs.** The system utilizes both standard headed and refractory fasteners to incorporate **flexibility and strength.**

*Standard Headed and Refractory Fasteners*



## Our Customers "Top 10" Benefits

SlenderWall® users demand a product that looks good, meets specifications, and performs.

- **DESIGN VERSATILITY**
- **THERMAL EFFICIENCY**
- **FIRE CODE COMPLIANCE**
- **RISK MITIGATION**
- **ECONOMICS**
- **STRUCTURAL SAVINGS**
- **SPEED TO MARKET**
- **REDUCED SITE IMPACT**
- **DURABILITY & QUALITY**
- **A TURNKEY PRODUCT**

## Fully Tested & Certified

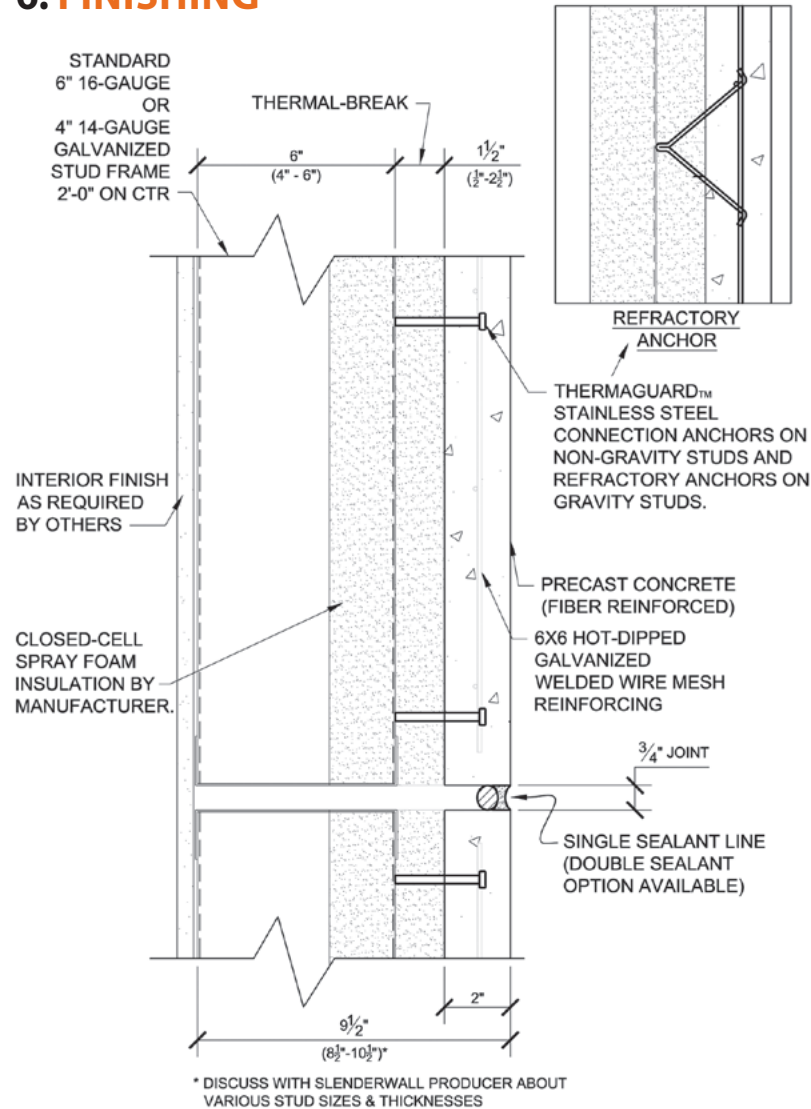
All testing performed by certified independent laboratories using nationally recognized standards and methods.

- **FIRE** (ASTM E119, E2226, NFPA 285)
- **SEISMIC** (AAMA 501.4)
- **STRUCTURAL** (ASTM E330)
- **WIND** (226MPH, 130PSF, NOA #90101.05)
- **AIR** (ASTM E283)
- **WATER** (ASTM E331, AAMA 501.1, 503.3)
- **THERMAL** (AAMA 501.5, 1503, ASTM C1363)
- **SOUND** (ASTM E90)
- **BLAST** (ARA-TR-10-000739)

# How It's Made

Proven materials and time-tested manufacturing methods create a durable and efficient composite panel.

1. BUILDING THE FRAMES
2. CREATING THE MOLDS
3. MIXING AND PLACING CONCRETE
4. INTEGRATING THE FRAME
5. INSULATING
6. FINISHING



1



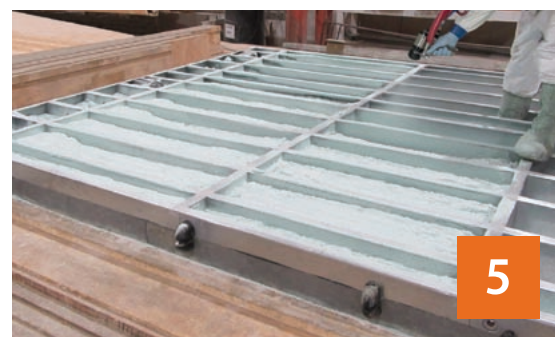
2



3



4



5



6

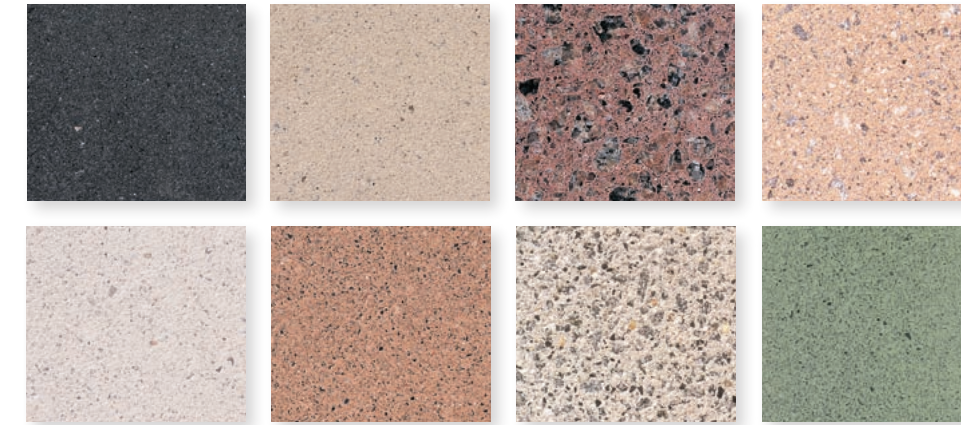


## FACTORY WINDOWS

**Optional:** The installation of factory installed windows in a controlled environment provides greater control over quality, allowing for better performance, faster erection schedules, fewer on-site trades, and lower project costs.

# Achieve The Look You Want

## A WIDE VARIETY OF COLORS AND FINISHES



SlenderWall® producers can make panels in any color or texture found within the PCI Color and Texture Guide. Over 24 colors/500 texture options are at your disposal for limitless possibilities.

## SAND BLASTING / ACID ETCHING



These are very simple but elegant solutions for finishing concrete surfaces. You can apply them across the entire panel or combine them to create custom patterns.

## THIN BRICK

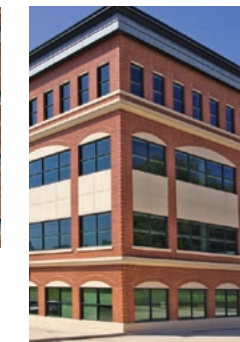


Find dozens of color and texture options using thin brick cast into the precast face.

## SECOND-NATURE™ BRICK



Our exclusive Second-Nature™ brick formliners create a durable and economical hand-laid look.



## STAINS/PIGMENTS



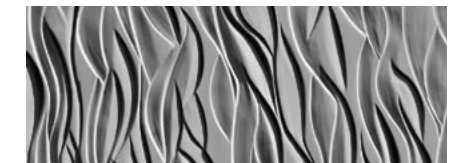
Play with color using integral pigments in the concrete mix or surface stains.

## REVEALS AND PROJECTIONS



Mimic more expensive traditional materials or create modern schemes.

## FORMLINERS



You are limited only by your imagination using formliners to create a cast face finish. Choose from dozens of standard patterns or design your own unique custom look.

# In A Variety Of Shapes And Sizes



- CUSTOM DESIGNS
- L-SHAPES
- M-SHAPES
- PUNCH WINDOWS
- RADIUS
- SPANDRELS

# Building Envelopes for the 22nd Century

Cliffside Towne Centre  
Cliffside Park, NJ



Is Your Team Ready To See More?  
**GO TO** SlenderWall.com

**SMITH-MIDLAND**<sup>®</sup>  
EXCELLENCE IN PRECAST CONCRETE



5119 Catlett Road, Midland, VA 22728 • info@smithmidland.com • 540-439-3266

[www.SmithMidland.com](http://www.SmithMidland.com)



Request a Quote or Lunch & Learn from your Regional Licensed Manufacturer

**SLENDERWALL**<sup>®</sup>

Architectural Precast Concrete/Steel Stud Insulated Building Panels

SlenderWall<sup>®</sup> is a licensed product of  
EasiSet.com • 800-547-4045 • info@easet.com



© 2021 Easi-Set Worldwide